

Software Version : EasyBuilder Pro V6.00.01.138

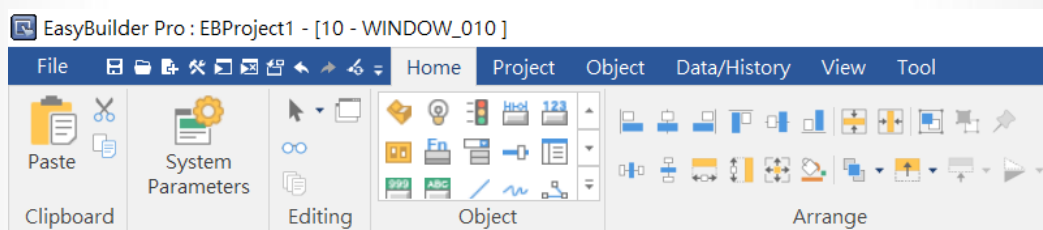
## Supported Models

Added support for cMT3072, cMT-G02, cMT-HDMI models.

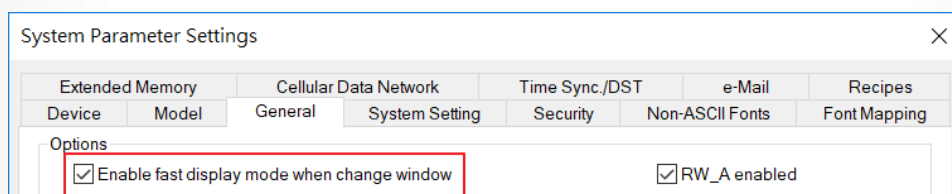
## New Features

### EasyBuilder Pro

1. Upgraded to Ribbon user interface that delivers brand new user experience. The Ribbon UI divides main menu into Ribbon Tabs, under which function icons are grouped. All EasyBuilder Pro icons are redesigned to make it easy for users to locate the desired functions.

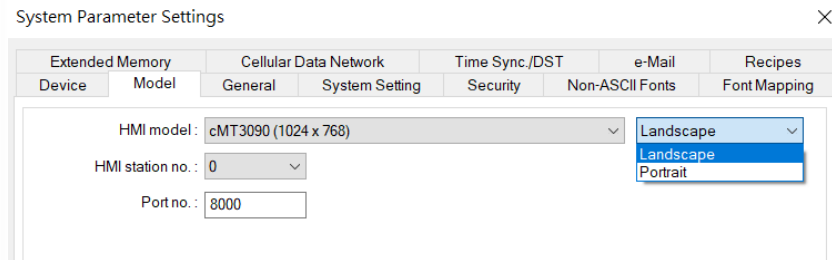


2. Added SQL Query and SQL Query Result Viewer objects. SQL Query object can execute SQL statement and exchange data with MySQL database. SQL Query Result Viewer can show SQL query execution result.
3. Added support for image caching for certain objects to achieve fast display after changing window. The objects are: Animation, Bar Graph, Bit Lamb, Meter Display, Moving Shape, Numeric, ASCII, and Word Lamp. The caching feature can be enabled in System Parameter Settings.

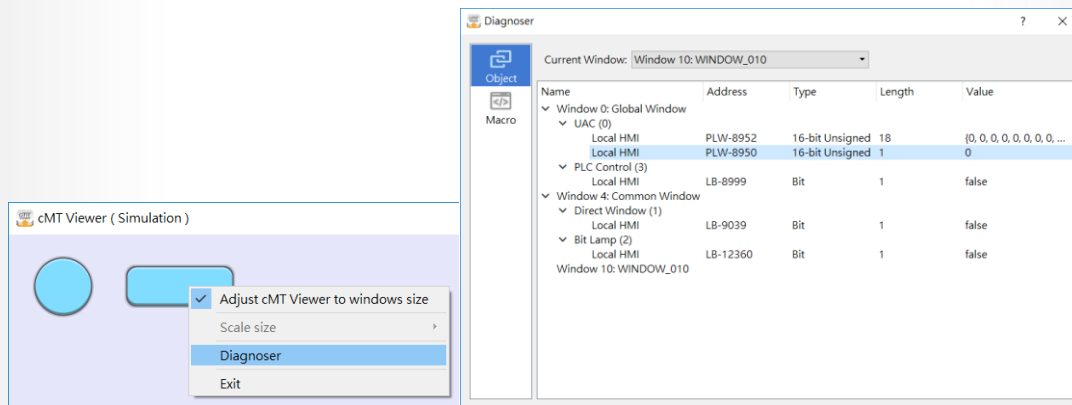


4. (cMT Series) Added support for the following actions for Combo Button: Popup Window, Close Window, Keyboard Input, Screen Hardcopy, Acknowledge All Event(Alarm), Import Data, and Wait Until.

5. Increased supported languages to 24 languages.
6. Added support for customized colors for System Picture Library.
7. Added support for changing orientation in System Parameter Settings.



8. (cMT Series) Added Crystal and Flat styles to simplify appearance settings for History Data Display and Operation Log Display objects.
9. (cMT Series) Added support for Diagnoser. In off-line/on-line simulation, this feature can be opened from the right-click menu and allows diagnostic operations such as: change window, view object information, read object value, write object value, trigger macro...etc.



10. Added support for generating a Picture object directly using the picture pasted from the clipboard.
11. (cMT Series) Added support for showing statistical information for Event Log object: occurrence and elapse time.
12. (cMT Series) Added support for Backup object to backup Data Logs that record data in Customized File Handling mode.
13. (cMT Series) Added support for AWS IoT for MQTT.

### *OPC UA (Ver. 1.1.0 Build 001)*

1. (cMT-G01/cMT-G02) **Added support for** using web interface to change OPC UA server parameters, edit nodes, manage certificates, and configure PLC communication parameters...etc. Please use web interface V1.0.4 or later.
2. Added support for automatic synchronization of user accounts used for OPC UA server and Enhanced Security Mode. As a result, changes made in the web interface will be immediately available in OPC UA Server.
3. Optimized the speed at which device disconnect message is updated to the client's end.
4. Improved communication efficiency for reading a large amount of data from a device.

### *Drivers*

1. Added **Bosch Rexroth SIS (Absolute Addressing)** driver.
2. Added **EMERSON ROC800 Series - Free Tag Names** driver.
3. Added **Codesys V2 (Absolute Addressing)** and **Codesys V2 (Absolute Addressing) (Ethernet)** drivers.